



Air Purifier
**AP600
Plus**

USER
MANUAL

aerbyon®

1. Precautions before use

1. After opening the product package, there are two items:
A. Air purifier B . User manual
2. The air purifier of this product is only for indoor use, not outdoor use.
3. A space of more than 10 cm should be left around the machine. Clothes, plastic bags and other sundries should not be placed at the inlet and outlet, so as not to hinder the entry and emission of air and affect the purification effect.
4. Do not spray any liquid or spray on the product or screen.
5. Avoid using AC/DC switching power supply in wet places.

2. Functions and Features

Air purifier [Deep and safe purification] : Filters 99.97% of harmful airborne pollutants including particulate matter PM2.5, allergens, dust, pollen, odors, pet dander and odor, cigarette and other smoke, cooking cake odor, VOCs and bacteria, 100% ozone-free, safe operation to improve indoor air quality.

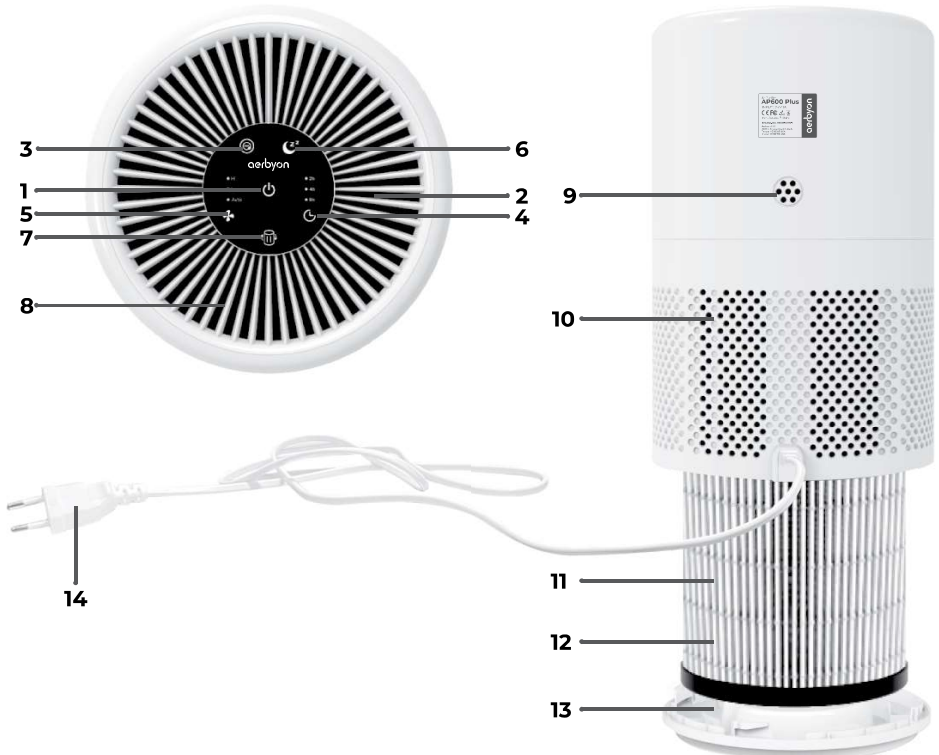
Allergies : Remove allergens from the air, including dust, pollen, pet dander, and mold spores.

Purify air : remove smoke and dust to purify the air and protect people from asthma and allergies caused by indoor pets. Activated charcoal filters remove household odors, cigarette smoke odor and volatile organic compounds such as paint fumes. Indoor air is recycled more than 2.5 times per hour in places like the bedroom, living room, study, bathroom, cloakroom, yacht, car and other places of air purification use.

3. Technical specifications

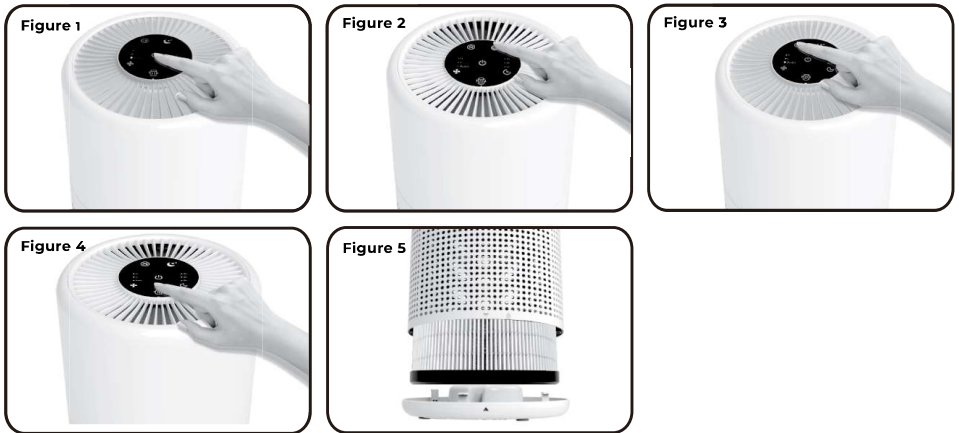
Clean air volume	Methanol: 4.9 m ³ /h TVOC: 1.5 m ³ /h CADR: 130 m ³ /h
Rated power	24 W
Machine weight	2.18 kg body
Volume	200 mm(diameter) x 327 mm(height)
Intelligent control	When you need to replace the air filter, the red indicator blinks
Best working environment	Indoor temperature above 15 °C, relative humidity above 40%

4. Parts name



- | | |
|---------------------------------|-------------------------------|
| 1. Power button | 8. Air outlet |
| 2. Green decorative lights | 9. Air sensors |
| 3. Negative ionization button | 10. Air intake |
| 4. Time Set button | 11. Activated Charcoal Filter |
| 5. Fan button | 12. HEPA filter |
| 6. Sleep Mode button | 13. Bottom cover |
| 7. Filter Replacement indicator | 14. Power Cable |

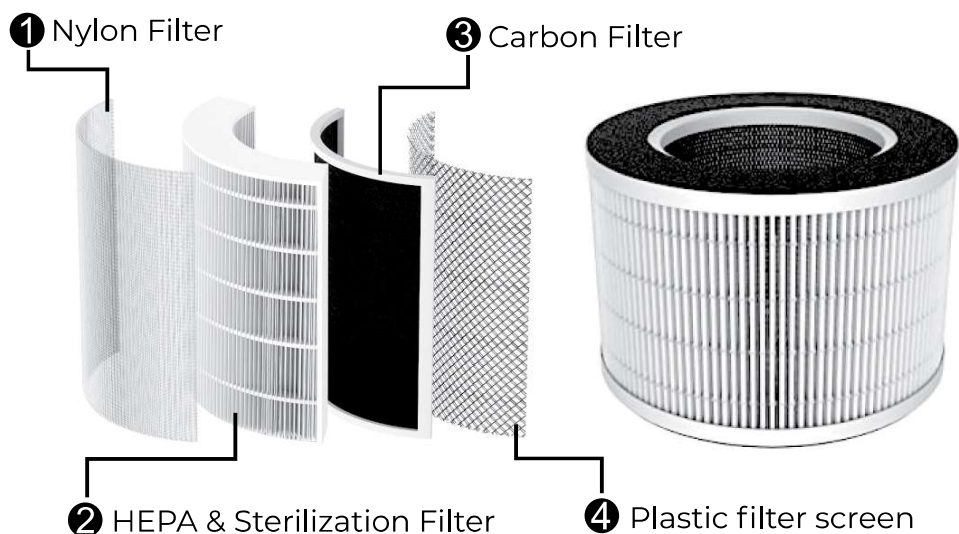
5. How to operate the machine



1. Connect the power supply plug **(14)** to the power socket at 100 to 240V/50 to 60Hz.
2. Press the Power button **(1)** to start up, As the machine starts to work, the green decorative light **(2)** will activate as well. When the fan is turned on, the fan runs in Auto mode by default, and the air flow will be discharged through the outlet **(8)**. **[Figure 1]**
3. After starting up, the fan works in Auto mode by default. Press the fan button to switch to Medium Speed with the indicator L lighting up, press it again to switch to High Speed mode with and the H indicator will light up. Pressing it again will return to Auto Mode and the corresponding indicator will light up.

4. After startup, the negative ion function is not enabled by default. Press the negative ion button **(3)** to turn on the negative ionization, and the negative ion key indicator will light up (as shown in **[Figure 3]**). Press the negative ion button again to turn it off, and the negative ionization indicator will turn off. This function can be used while in sleep mode.
5. After starting up, press the timing button **(4)** for 2-hour customization, press twice for 4-hour customization, and press three times for 8-hour customization. The indicator light will correspond to the selected mode. Press it again to stop running and the indicator light will turn off.
6. After the machine is turned on, the sleep mode can be activated with the sleep mode button **(6)**. After it is turned on, the sound becomes smaller, the decorative light goes out, and the machine continues to work. **[Figure 2]**
7. When shutting down, please gently press the power button **(1)** and the machine will stop working **[Figure 4]**. If not used for a long time, please pull out the power cable **(14)**.
8. The machine has tracks accumulated running time. When the total work of the machine reaches 3 months, the filter replacement indicator **(7)** will flash red, indicating the user should replace the filter element.
9. Please turn off the machine before replacing the filter screen, then unscrew the knob from the bottom of the machine, open the bottom cover **(13)**, take out the filter screen **(12)**, put the new filter screen back to the correct position in the machine, and screw on the bottom cover. **[Figure 5]**
10. If you need to continue cleaning, restart the machine.

5. Filter core decomposition graph



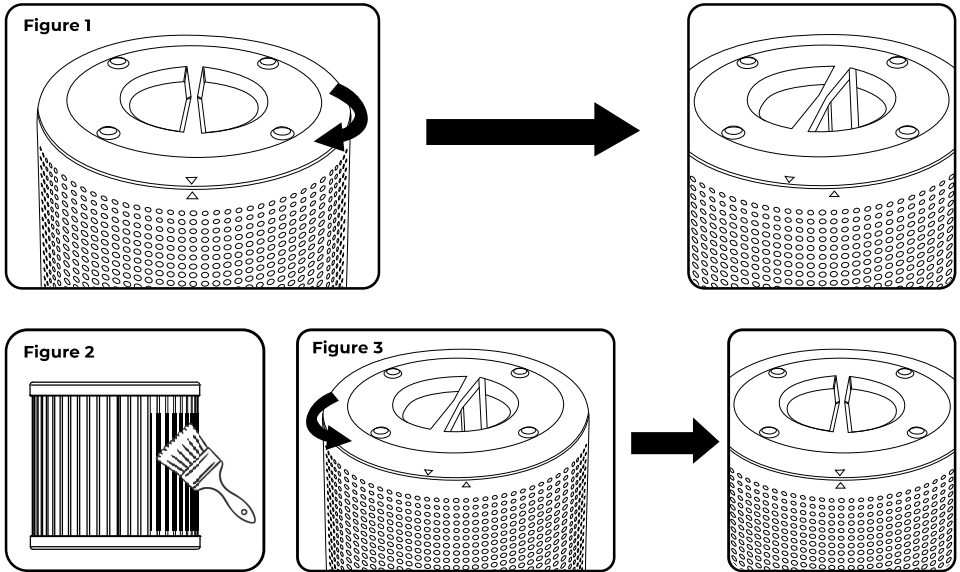
6. Daily cleaning and maintenance

1. When cleaning and maintaining the product, ensure that the power cable is disconnected.
2. Wipe the body with a moderately moist and clean soft rag, and then wipe dry with a dry rag. Please do not wet the machine with water directly.
3. Clean the inlet and outlet of the machine with a brush. If not used for a long time, the machine should be stored in a dry and ventilated place.

7. Clean and replace the screen

1. Unscrew the bottom knob of the product, open the bottom cover, and take out the filter screen. **[Figure 1]**
2. Use a dry brush or vacuum cleaner to clean the surface of the filter. **[Figure 2]**

3. Place the clean screen into the product and screw in the bottom cover. **[Figure 3]**



8. Common faults and troubleshooting methods

If the machine fails, please perform the following self-inspection before contacting the dealer or service department.

Check out the following possibilities:

Failure Phenomenon	Cause Analysis	Solution
This machine is not running	Power off	Turn on the power switch
	Power plug released	Plug in the power plug
	The filter is not in place	Put the filter in
The light flashes	The filter needs to be replaced	Replace the filter

For more information, please visit us at
aerbyon.com



aerbyon

TM and © 2023 Aerbyon LLC. All rights reserved

Air Purifier

AP600 Plus



EPA Est. No. 99396-CHN-1

Aerbyon LLC

5869 S. Kyrene Road, Suite 8,
Tempe, AZ 85283 USA

Phone: +1 833 716 0123